

### ROAD INDEX

I cont.	R	ROCK CREEK RD. A6-F4
J		
BURROWS RD. B6-F6	S	SHORT RD. F2-F3 SIDLEY RD. F1-F6 STOCKING RD. D1-F1
K		
CLAY STREET B1-B6	T	THOMPSON RD. A3-F3 TRASK RD. A2-A3
L		
LEDGE RD. D1-D4 LEROY RD. A3	U	
D	M	MADISON RD. D1-D6 MOSELEY RD. A1-F2
DEWEY RD. C1-C6	V	VALENTINE RD. A4-B4
E		
F	Z	
G		
H	W	WOODCREEK DR. B6 WOODHILL DR. B6
I	O	
	X	
	P	PHILIPS RD. F3 PLANK RD. A5-B6
	Y	
	Z	

**THOMPSON TOWNSHIP**

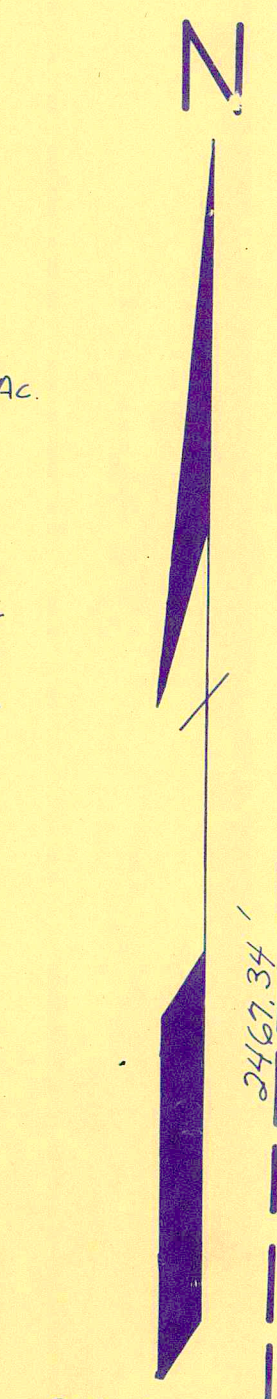
SCALE: 1" = 2000'

ROBERT L. PHILLIPS,  
GEORGIA COUNTY ENGINEER

UNPAVED ROADS (dashed line)  
PAVED ROADS (solid line)  
TOWNSHIP LINE (dotted line)  
COUNTY LINE (dash-dot line)

- 1 LEDGEMONT HIGH SCHOOL
- 2 LEDGEMONT ELEM. SCHOOL
- 3 THOMPSON METHODIST CHURCH
- 4 ST. PATRICKS CHURCH
- 5 GRACE EVANGELICAL LUTHERAN CH. CEMETERY
- 6 MAPLE GROVE CEMETERY
- 7 CEMETERY
- 8 THOMPSON VOL. FIRE DEPT.
- 9 THOMPSON TOWN HALL

L A K E C O U N T Y



INDICATES SURVEY ON FILE WITH TAX MAP DEPT.

\* Inadequate description

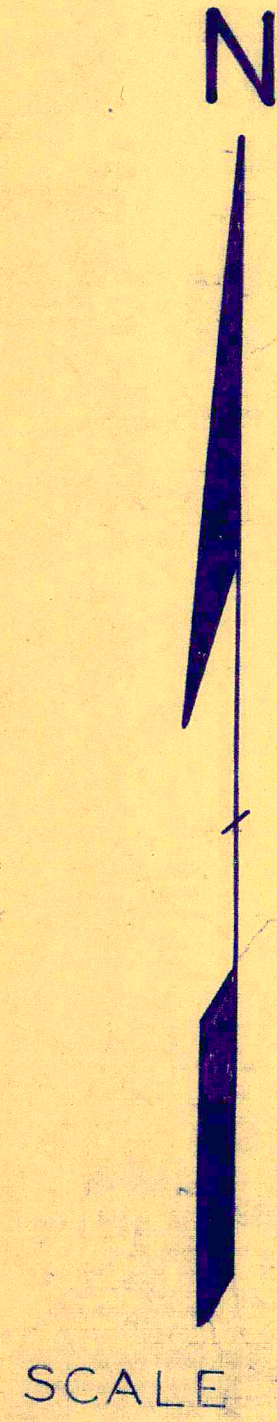
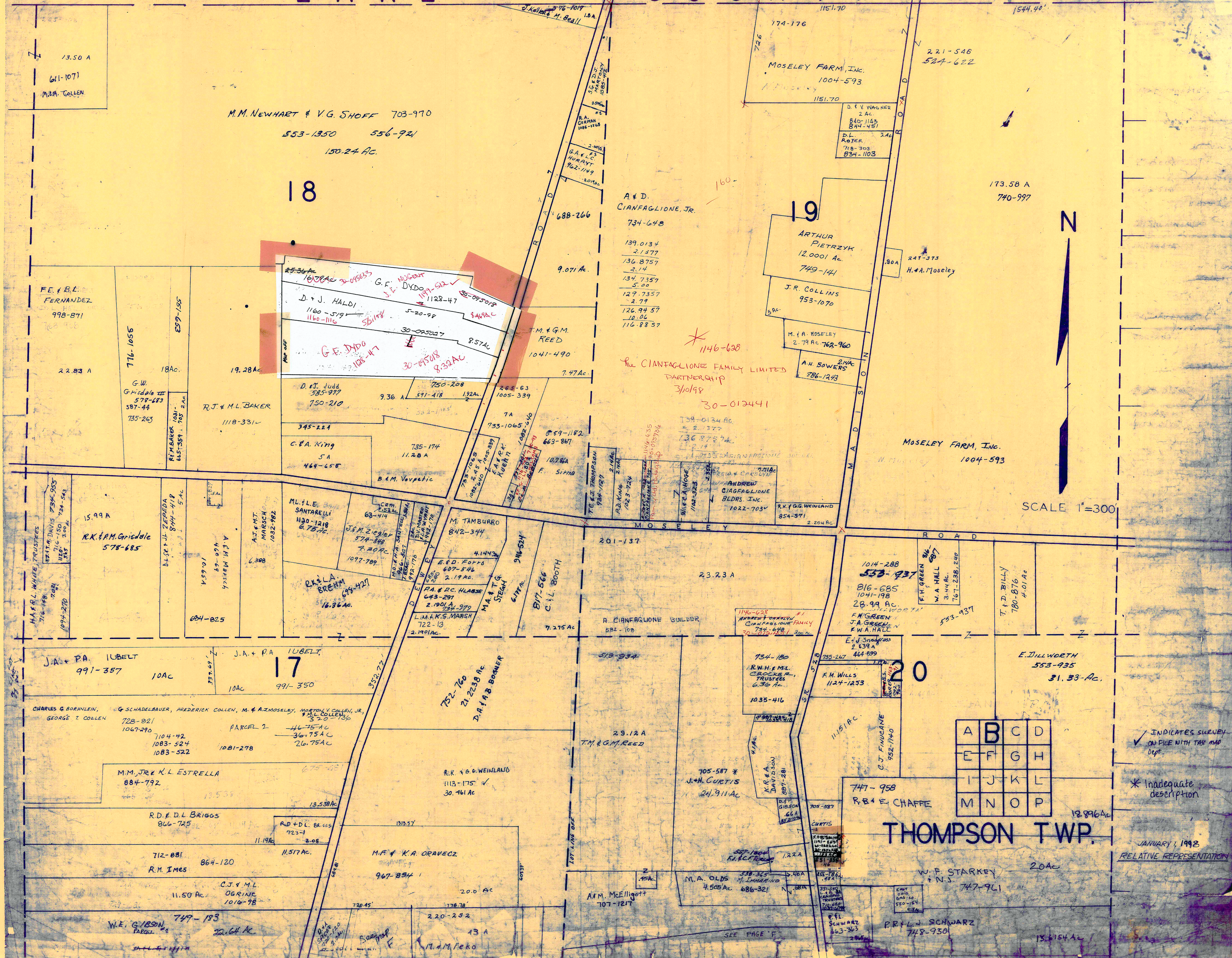
INDICATES SURVEY ON FILE IN TAX MAP DEPT. JANUARY 1, 1998

RELATIVE REPRESENTATION

A	B	C	D
E	F	G	H
I	J	K	L
M	N	O	P

THOMPSON TWP.

# L A K E C O U N T Y



A	B	C	D
E	F	G	H
I	J	K	L
M	N	O	P

THOMPSON TWP.

INDICATES SURVEY ON FILE WITH TAX MAP Dept.  
\* Inadequate description  
JANUARY 1, 1998  
RELATIVE REPRESENTATION

13.50 A  
611-1071  
M.M. COLLEN

M.M. NEWHART & V.G. SHOFF 703-970  
553-1950 556-921  
150.24 AC.

18

A & D.  
CIANFAGLIONE, JR.  
734-648

19

ARTHUR PIETRZYK  
12,000 AC.  
749-141

221-546  
527-622

173.58 A  
740-997

F.E. & B.L. FERNANDEZ  
998-871

G.W. G. HILDAL  
578-683  
587-44  
735-263

R.J. & M.L. BAKER  
1118-331

D. & J. HALDI  
1160-519  
1160-116

G.E. DYDO  
1108-47

T.M. & G.M. REED  
1041-490

J.R. COLLINS  
953-1070

M. & A. MOSELEY  
2.79 AC. 762-960

A.H. BOWERS  
786-1243

CIANFAGLIONE FAMILY LIMITED PARTNERSHIP  
3/10/98  
30-01241

MOSELEY FARM, INC.  
1004-593

H.A. & L. WHITE, TRUSTEES  
716-148

R.K. & P.M. GRISDOL  
578-685

A.J. & M.T. MARSCH  
1032-982

M.L. & L.E. SANTARELLI  
1130-1218  
6.78 AC.

J.M. & M. ZICGLER  
574-848  
7.20 AC.

M. TAMBURRO  
842-344

E.D. FOPPO  
607-546  
2.19 AC.

P.A. & D.C. HLABSE  
643-291  
2.1901 AC.

L.M. & K.S. MARSH  
722-13  
2.1401 AC.

A. CIANFAGLIONE BUILDER  
582-108

1014-288  
533-937

E. JILLWORTH  
553-935  
31.33 AC.

J.A. & P.A. IUBELT  
991-357  
10 AC.

J.A. & P.A. IUBELT  
991-350  
10 AC.

CHARLES G. BOENLEIN,  
GEORGE T. COLLEN  
728-821  
1047-290

G. SCHADELBAUER, FREDERICK COLLEN, M. & A. MOSELEY, MORTON V. COLLEN, JR., M.L. COLLEN  
7104-42  
1083-524  
1083-522

M.M. JR. & K.L. ESTRELLA  
884-792

R.K. & G.G. WEINLAND  
1113-175  
30.46 AC.

734-180  
R.W.H. & M.L. CROCKER, TRUSTEES  
6.36 AC.

1035-416

705-587 \*  
J.H. CURTIS  
24,911 AC.

F.M. WILLS  
1124-1253

E.J. SWANSON  
2.33 AC.

18.896 AC.

712-881  
R.M. IMES

R.D. & D.L. BRIGGS  
866-725

RD. & D.L. BRIGGS  
723-1  
2.08

M.F. & K.A. ORAVECZ  
967-894

20.0 AC.

2.20-252

A.F.M. McElligott  
707-1217

M.A. OLDS  
4.505 AC.

747-958  
R.B. & E. CHAFFE

W.F. STARKEY & N.J.  
747-961

P.R. & L.J. SCHWARZ  
748-930

15.6154 AC.

W.E. GIBSON  
749-183

C.J. & M.L. OGRINE  
1016-98

11.50 AC.

13.538 AC.

13.57

13 A

2.20-252

4.505 AC.

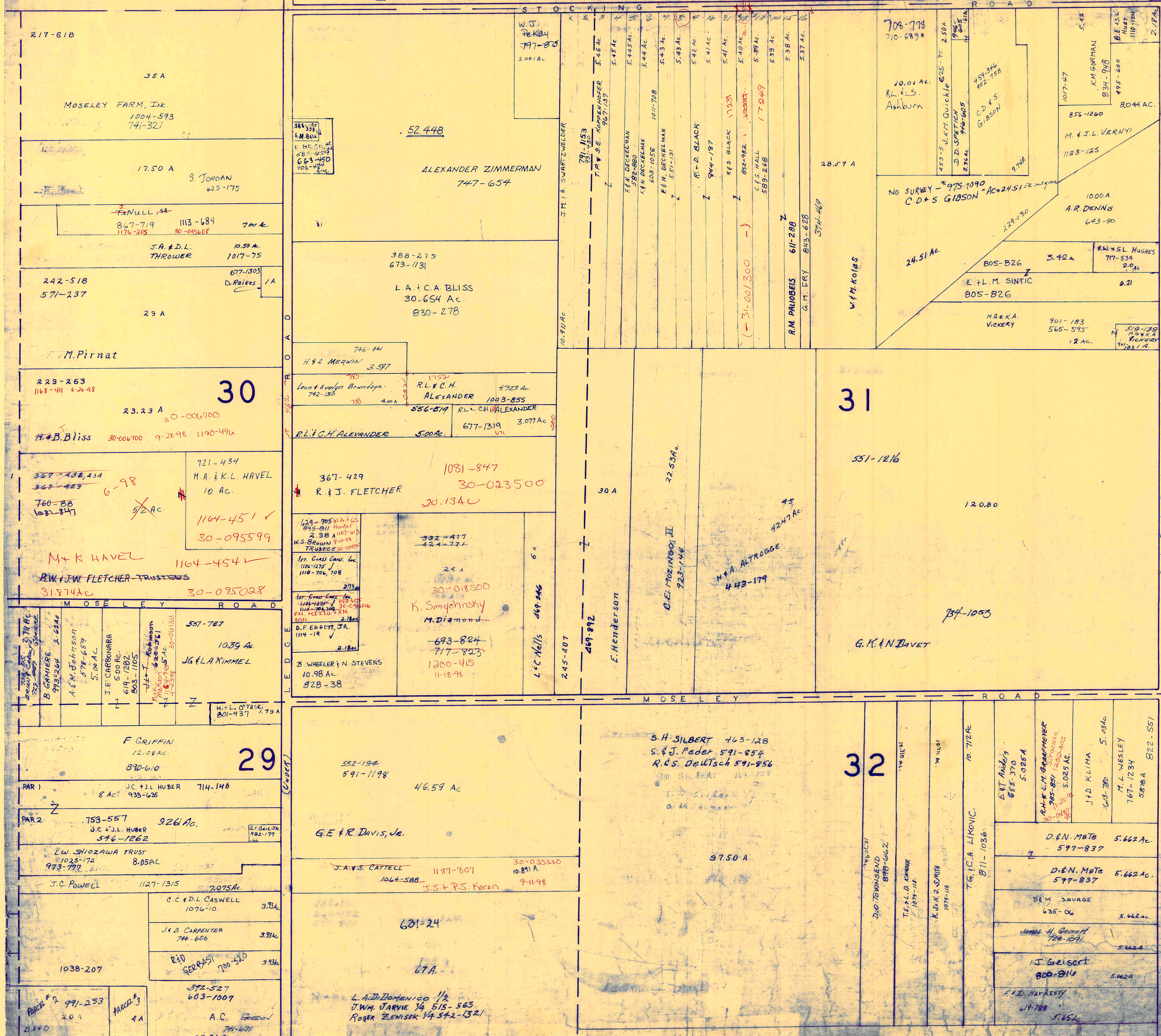
747-958

747-961

748-930

15.6154 AC.

L A K E C O U N T Y



SCALE 1" = 300'

A	B	C	D
E	F	G	H
I	J	K	L
M	N	O	P

THOMPSON TWP

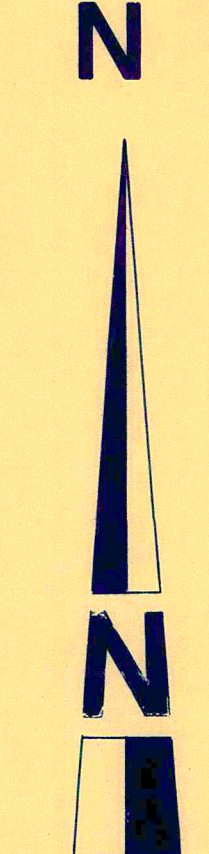
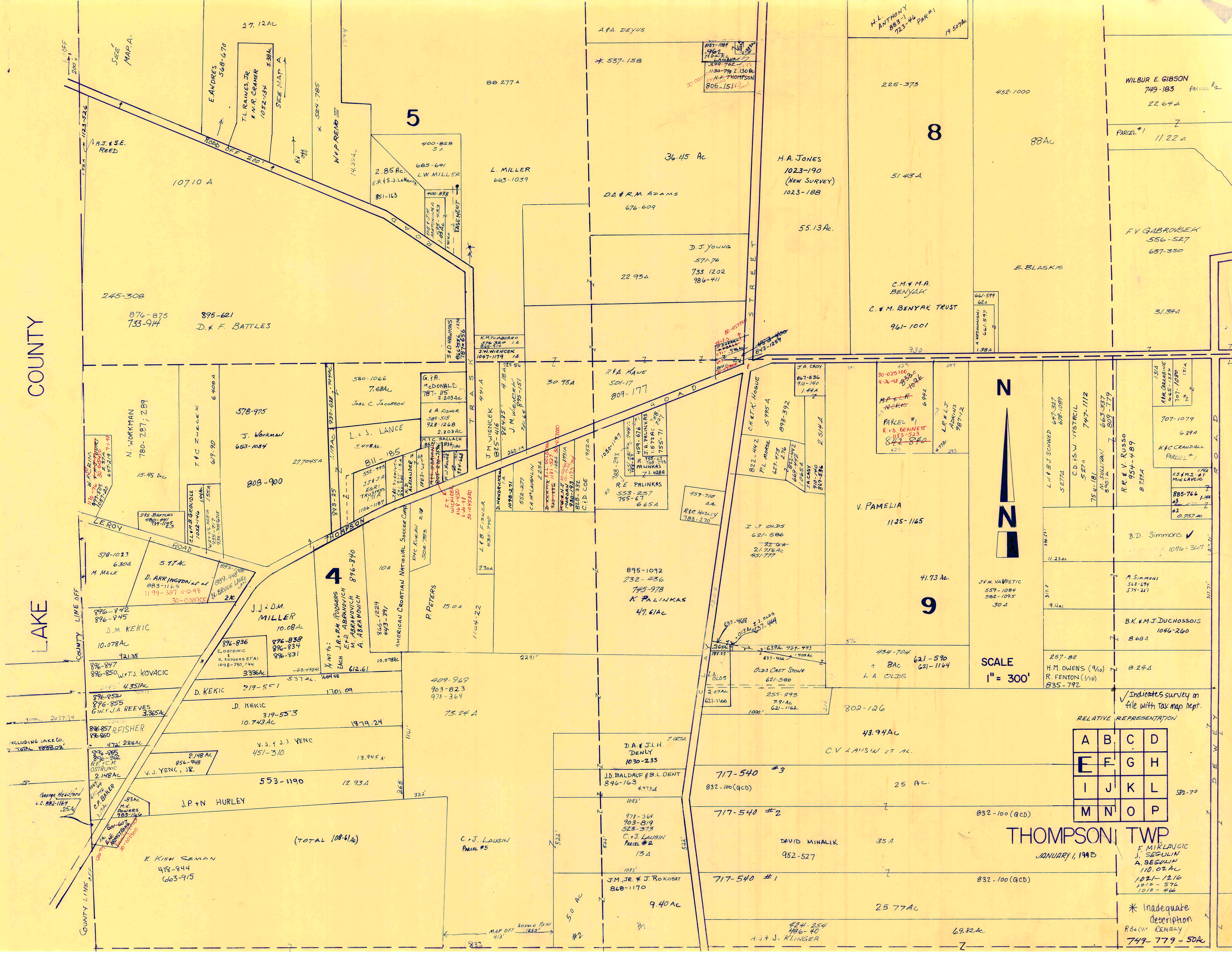
JANUARY 1, 1948  
RELATIVE REPRESENTATION

- \* Inadequate description
- ✓ Indicates survey on file with Tax map Dept.



COUNTY

LAKE



SCALE  
1" = 300'

✓ Indicates survey on file with tax map dept.

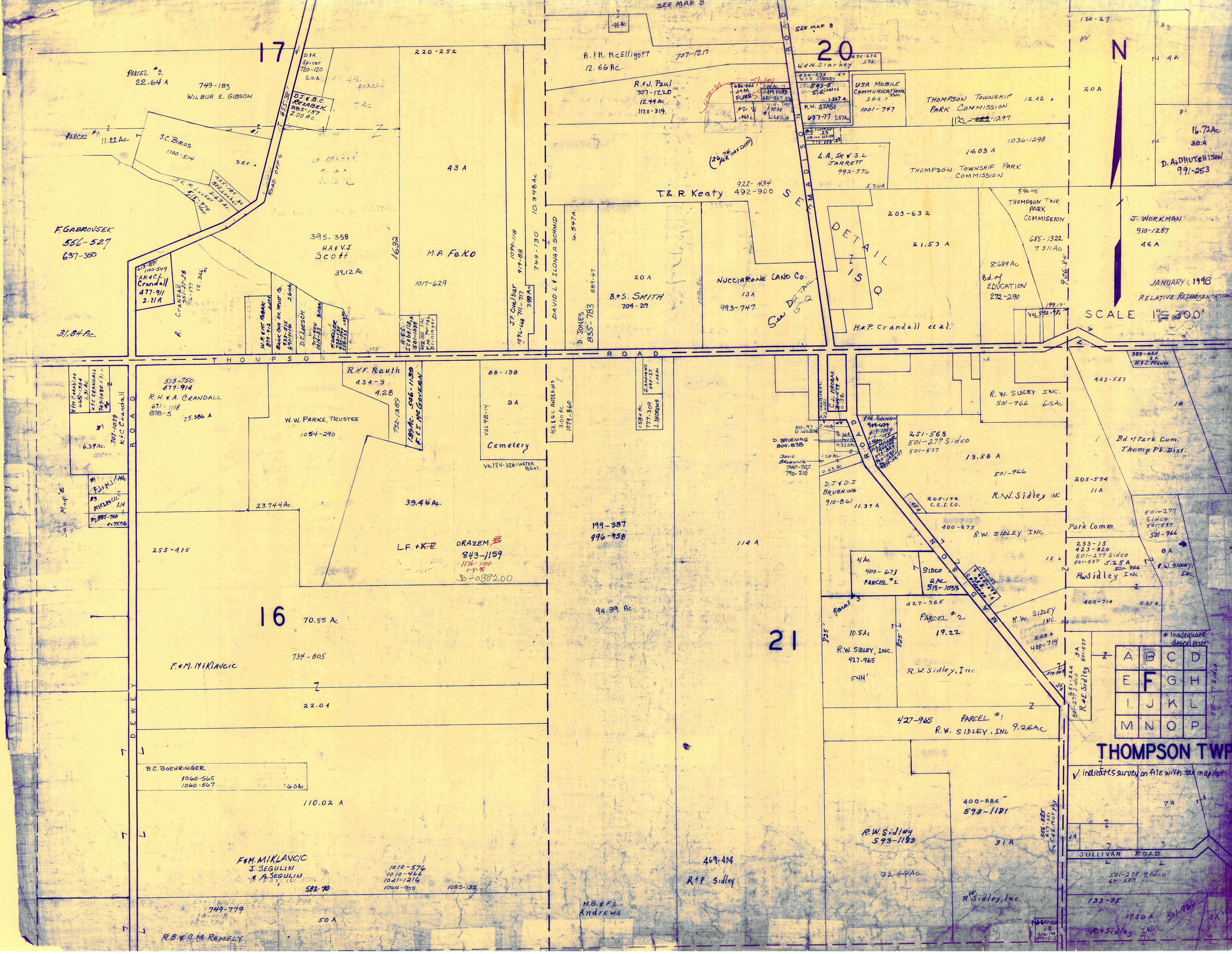
RELATIVE REPRESENTATION

A	B	C	D
E	F	G	H
I	J	K	L
M	N	O	P

THOMPSON TWP  
JANUARY 1, 1998

F. MIKLAJVIC  
J. SEGULIN  
A. SEGULIN  
110.02 AC  
102-1216  
1010-576  
1010-466

\* Inadequate description  
R.G. & C. KEMELY  
749-779-50A



20

17

16

21

N

SCALE 1" = 300'

JANUARY 1, 1998  
RELATIVE REPRESENTATION

A	B	C	D
E	F	G	H
I	J	K	L
M	N	O	P

THOMPSON TWP.

✓ indicates survey on file with tax map dept.

SULLIVAN ROAD

F. GABROVSEK  
556-527  
637-350

PARCEL #2  
22.64 A  
749-183  
WILBUR E. GIBSON

PARCEL #1  
11.22 Ac  
S.C. BROS  
1100-514

F. GABROVSEK  
556-527  
637-350

R.H.A. CRANDALL  
671-118  
878-5  
25.386 A

F.M. MIKLAVCIC  
734-805

B.C. BOEHRINGER  
1060-565  
1060-567  
6.04c

F.M. MIKLAVCIC  
J. SEGULIN  
A. SEGULIN  
582-70

R.B. + O.M. REMELY  
749-779  
50 A

HA + VJ  
SCOTT  
39.12 Ac

R.F. RAUTH  
434-9  
4.28

L.F. + K.E. ORAZEM  
843-1159  
1136-1100  
1-8-98  
30-088200

1010-576  
1010-466  
1021-1216  
1064-905  
1085-122

M.A. FEKO  
1017-629

88-198  
9A  
VOL 92-14

Cemetery  
VOL 124-326-WATER RIGHT

199-387  
996-958

H.B. + F.L.  
ANDREWS

A. + M. McELLIOTT  
12.66 Ac  
707-1277

T.R. KEATY  
922-434  
492-900

B.S. SMITH  
704-29

H.R. + G.L. ANDREWS  
300 AC  
1071-860

94.39 Ac

469-434  
R.E.P. Sidley

R.U. PAUL  
707-1270  
12.44 Ac  
1120-314

T.R. KEATY  
922-434  
492-900

B.S. SMITH  
704-29

H.R. + G.L. ANDREWS  
300 AC  
1071-860

94.39 Ac

469-434  
R.E.P. Sidley

J.M. FURR  
680-287-530  
110 Ac

T.R. KEATY  
922-434  
492-900

B.S. SMITH  
704-29

H.R. + G.L. ANDREWS  
300 AC  
1071-860

94.39 Ac

469-434  
R.E.P. Sidley

M.W. STABO  
677-771-5741

T.R. KEATY  
922-434  
492-900

B.S. SMITH  
704-29

H.R. + G.L. ANDREWS  
300 AC  
1071-860

94.39 Ac

469-434  
R.E.P. Sidley

USA MOBILE COMMUNICATIONS  
1001-747

T.R. KEATY  
922-434  
492-900

B.S. SMITH  
704-29

H.R. + G.L. ANDREWS  
300 AC  
1071-860

94.39 Ac

469-434  
R.E.P. Sidley

L.A. Sr + S.L. JARRETT  
992-576

T.R. KEATY  
922-434  
492-900

B.S. SMITH  
704-29

H.R. + G.L. ANDREWS  
300 AC  
1071-860

94.39 Ac

469-434  
R.E.P. Sidley

THOMPSON TOWNSHIP PARK COMMISSION  
12.42 A

T.R. KEATY  
922-434  
492-900

B.S. SMITH  
704-29

H.R. + G.L. ANDREWS  
300 AC  
1071-860

94.39 Ac

469-434  
R.E.P. Sidley

THOMPSON TOWNSHIP PARK COMMISSION  
12.42 A

T.R. KEATY  
922-434  
492-900

B.S. SMITH  
704-29

H.R. + G.L. ANDREWS  
300 AC  
1071-860

94.39 Ac

469-434  
R.E.P. Sidley

THOMPSON TOWNSHIP PARK COMMISSION  
12.42 A

T.R. KEATY  
922-434  
492-900

B.S. SMITH  
704-29

H.R. + G.L. ANDREWS  
300 AC  
1071-860

94.39 Ac

469-434  
R.E.P. Sidley

16.72 Ac  
30-A  
D. ADHUTCHISON  
991-253

T.R. KEATY  
922-434  
492-900

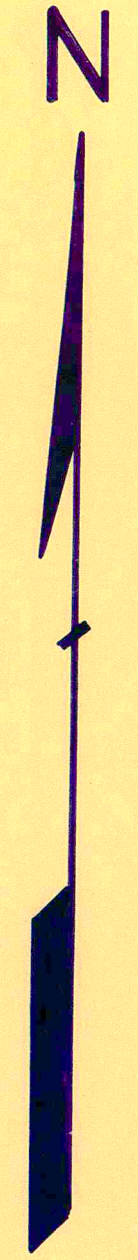
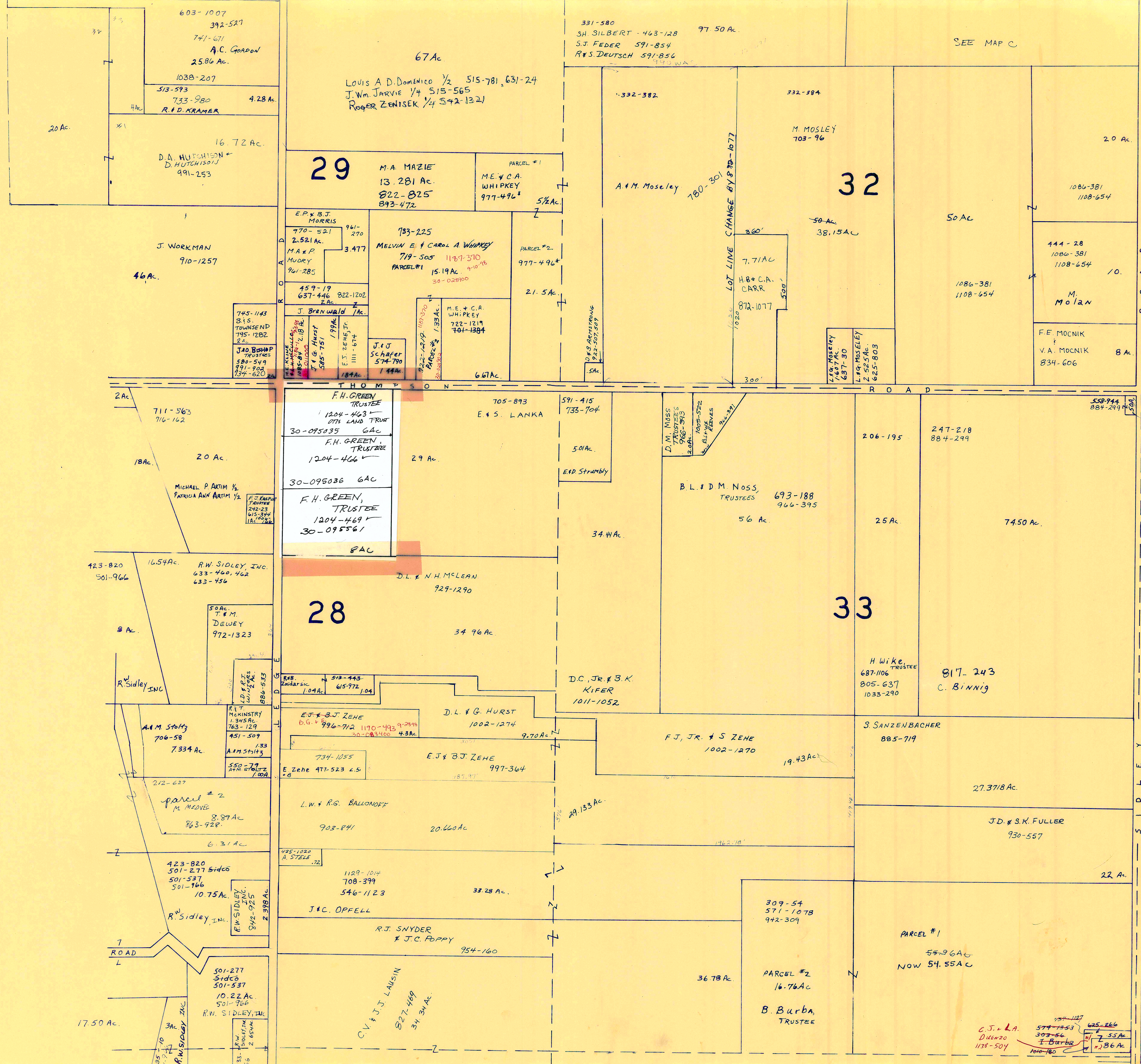
B.S. SMITH  
704-29

H.R. + G.L. ANDREWS  
300 AC  
1071-860

94.39 Ac

469-434  
R.E.P. Sidley

17.50 A  
501-966  
R.W. Sidley, Inc.



SCALE 1" = 300'

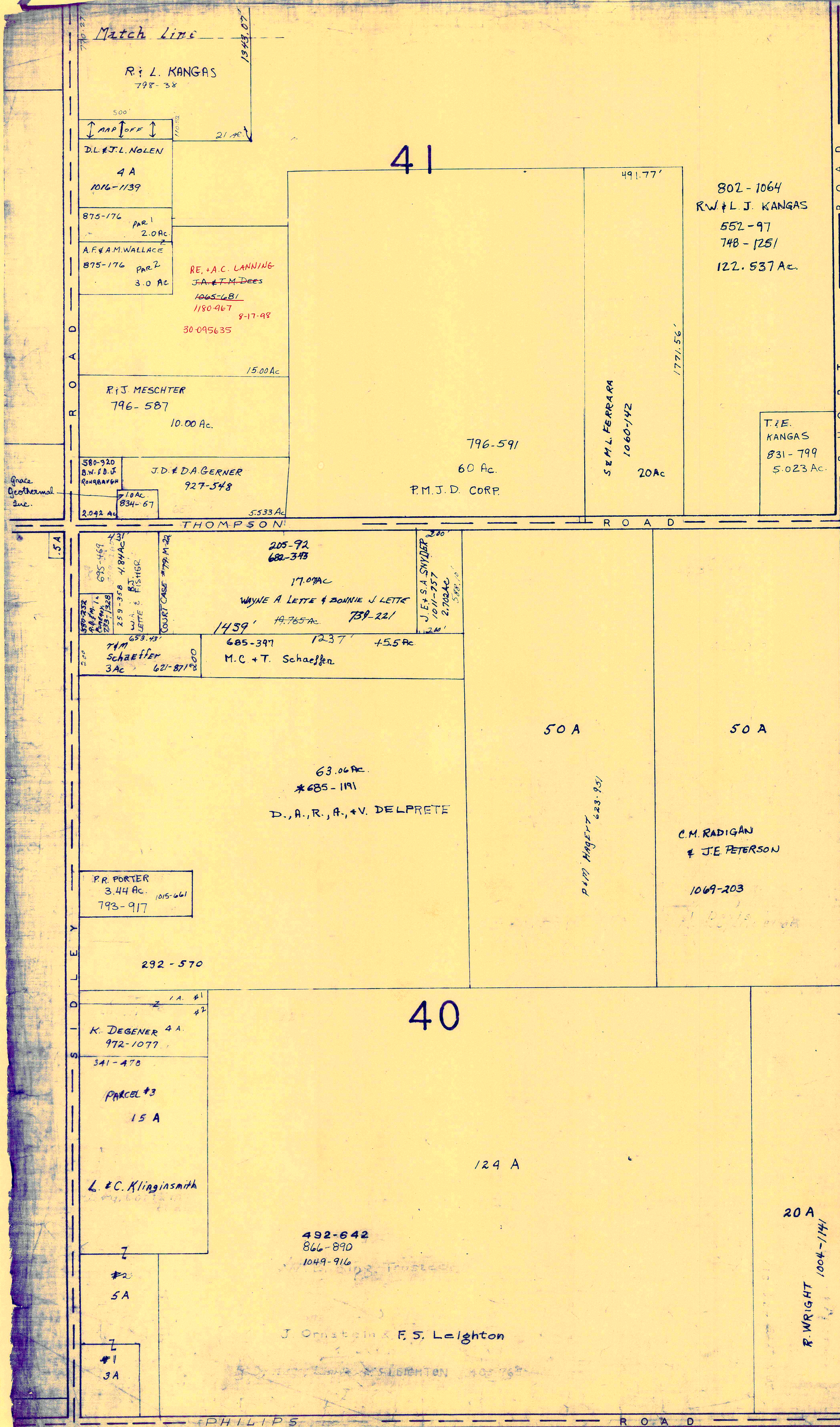
A	B	C	D
E	F	G	H
I	J	K	L
M	N	O	P

**THOMPSON TWP.**

JANUARY 1, 1998  
RELATIVE REPRESENTATION

\* Inadequate description

✓ 58-1996 SURVEY FILED IN TAX MAP DEPT.



C O U N T Y  
A S H T A B U L A

Match Line



SCALE 1" = 300'

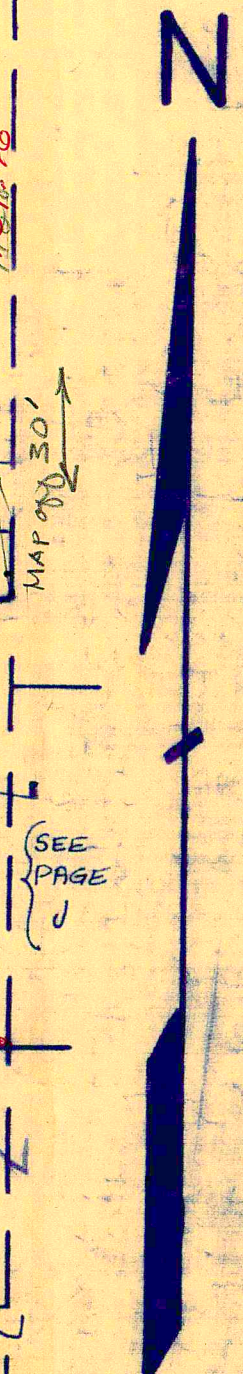
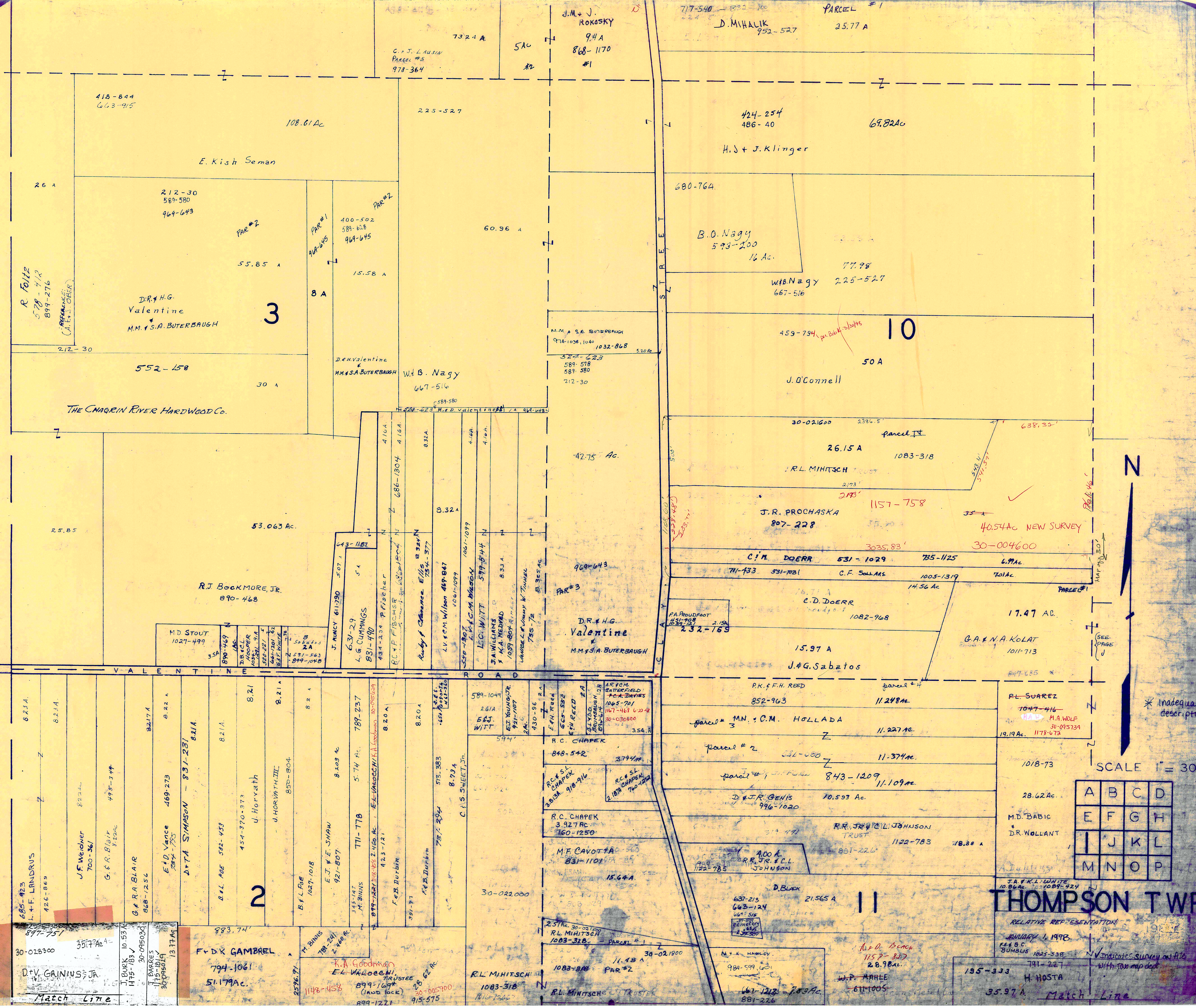
JANUARY 1, 1998  
RELATIVE REPRESENTATION  
V INDICATES SURVEY OR FILE IN TAX MAP DEPARTMENT

A	B	C	D
E	F	G	H
I	J	K	L
M	N	O	P

T H O M P S O N T W P.

COUNTY

LAKE



SCALE 1" = 300'

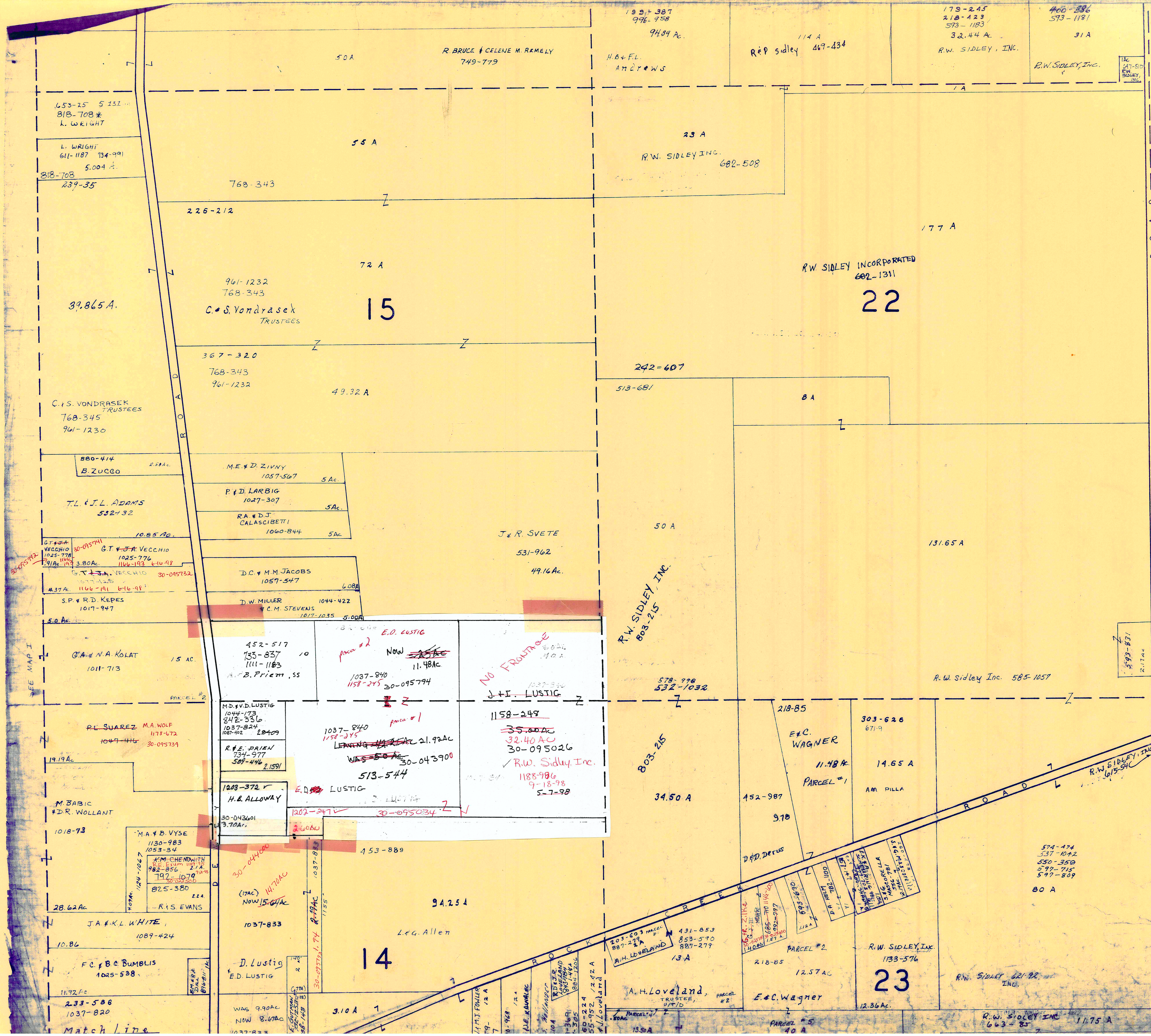
A	B	C	D
E	F	G	H
I	J	K	L
M	N	O	P

THOMPSON TWP

RELATIVE REPRESENTATION  
 JANUARY 1, 1998  
 C.E. & C.C. BUMBLES 1005-538  
 H. HOSTA 791-227  
 35.97 A Match Line

\* Inadequate description

Indicates Survey on file with map dept.



SCALE 1" = 300'

\* Inadequate description  
 ✓ indicates survey in file with tax map dept.

A	B	C	D
E	F	G	H
I	J	K	L
M	N	O	P

THOMPSON TWP

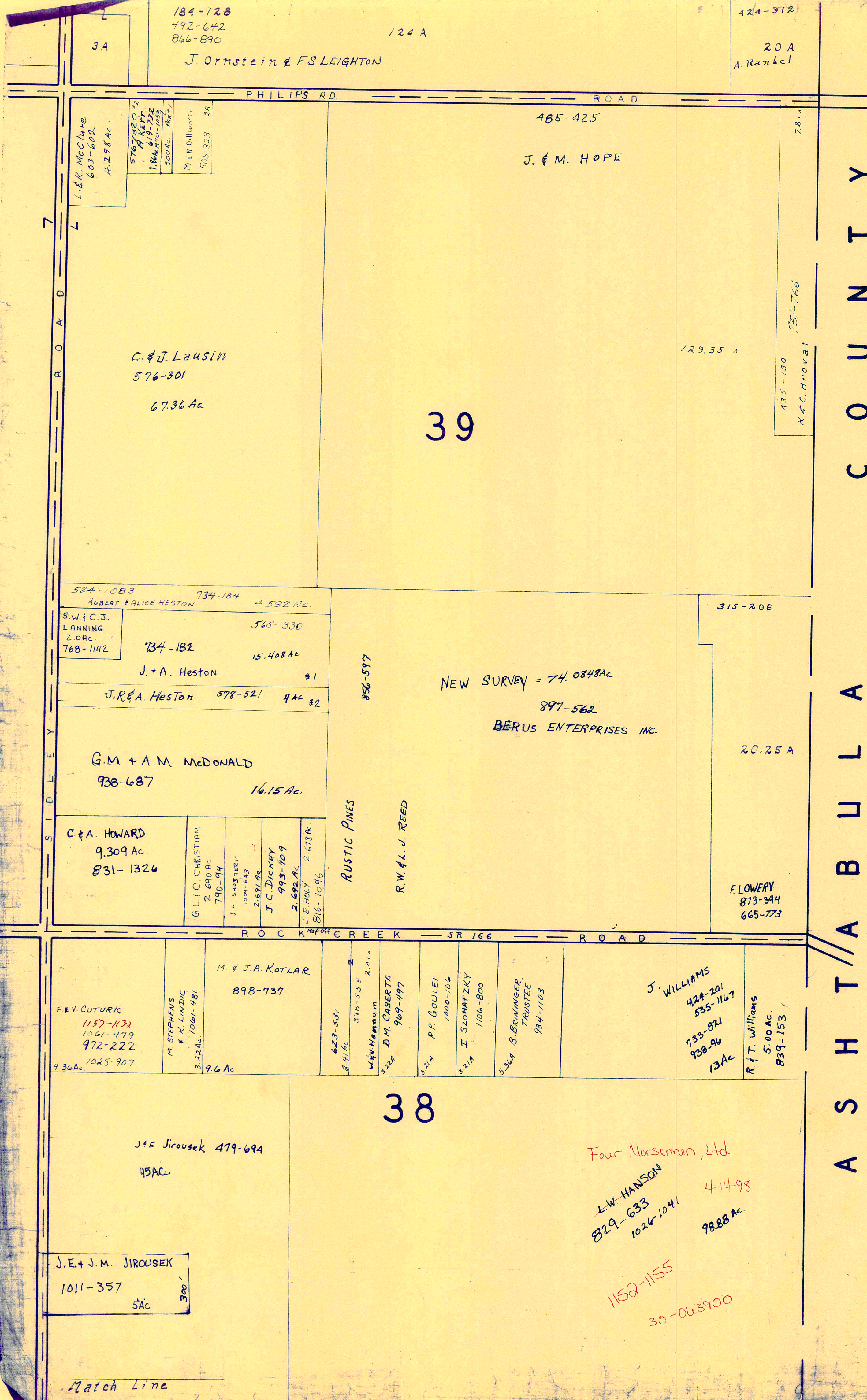
JAN. 1, 1998

RELATIVE REPRESENTATION

Match Line

Match Line





A S H T A B U L L A C O U N T Y



x Inadequate description  
 ✓ indicates survey on file with tax map dept.

SCALE 1" = 300'

JAN 1, 1998  
 RELATIVE REORIENTATION

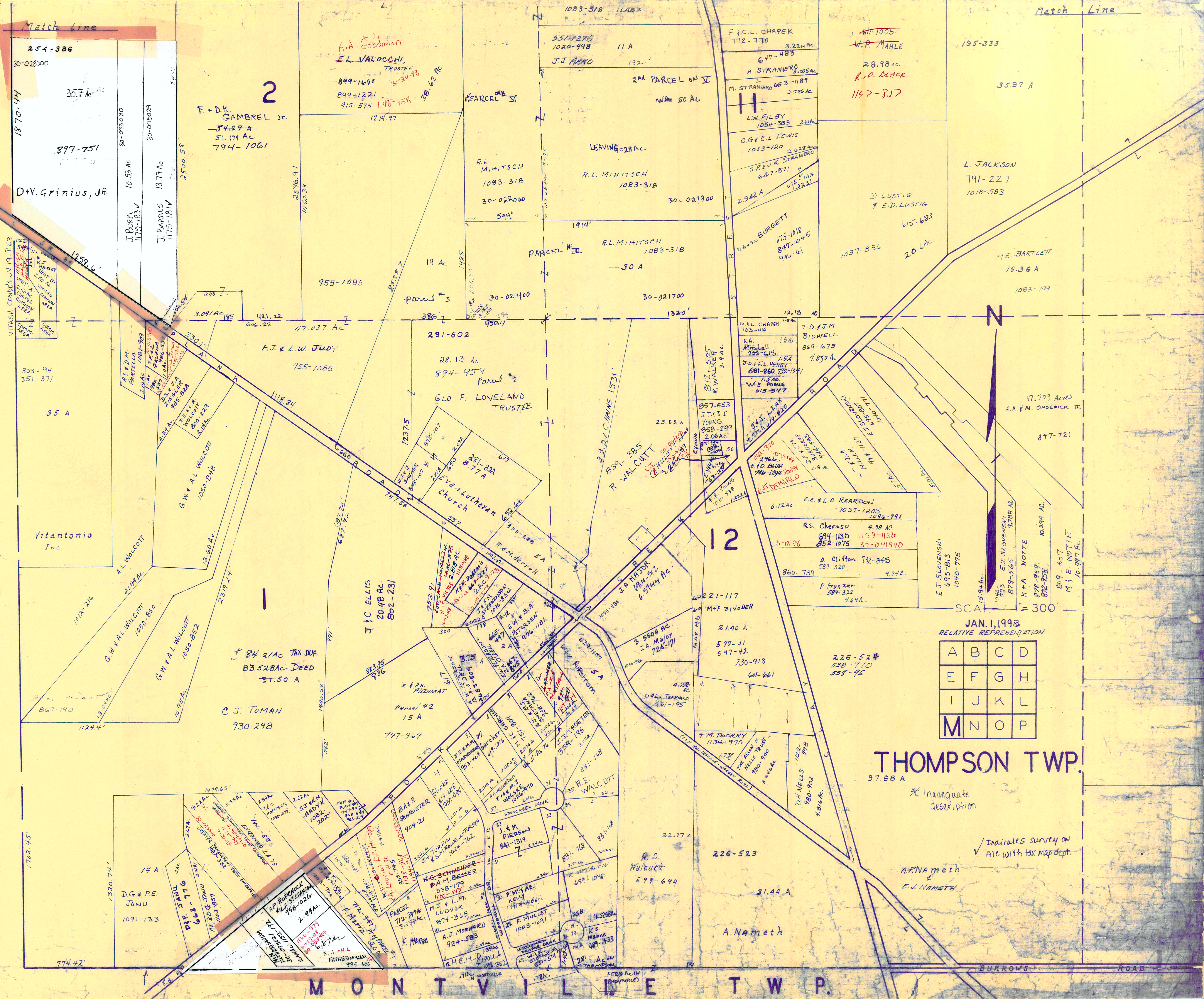
A	B	C	D
E	F	G	H
I	J	K	L
M	N	O	P

THOMPSON TWP  
 Match Line

Match Line

VITASH CONDOMINIUMS, VOL. 19, PG. 63  
UNIT "K"  
UNIT "B"

L  
A  
K  
E  
C  
O  
U  
N  
T  
Y



JAN. 1, 1998  
RELATIVE REPRESENTATION

A	B	C	D
E	F	G	H
I	J	K	L
M	N	O	P

# THOMPSON TWP.

97.68 A

\* Inadequate description

✓ Indicates survey on file with tax map dept.

A.P. Nameth  
E.J. Nameth

M  
O  
N  
T  
V  
I  
L  
L  
E  
T  
W  
P.

Match Line

Match Line

233-586

Parcel # 2  
15 Ac - DEED  
D. LUSTIG  
M. LUSTIG

1037-820  
(61 AC)  
WEST side  
A. Lustig

Parcel # 1 (69 Acs. Lot)  
VOL 233-588  
TAX DUPLICATE =  
30-044200  
TAX DUPLICATE TOTAL = 78.66 AC  
D. Lustig 1037-820  
M. LUSTIG

D. LUSTIG  
ED. LUSTIG  
8.67 AC.  
1037-833  
272-871  
166  
166  
166  
VOL 64-1009-50

14

20.25Ac

153-889

94.25 A

972-246\*  
552-653\*  
J.D. K.L. & C.  
FETERLIN,  
TRUSTEES  
13.10 CH.

L.G. Allen

12 A

12 A

R.V. & M.J. FOWLER  
859-147

R.C. & J.E. KANABLER  
500-26

J.K.S. HOLLANDER  
507-869  
615-305

260-224  
775-952  
R. & J. Loveland

218-85

23

13 1/2 AC

40 A

11.75 A

35 A

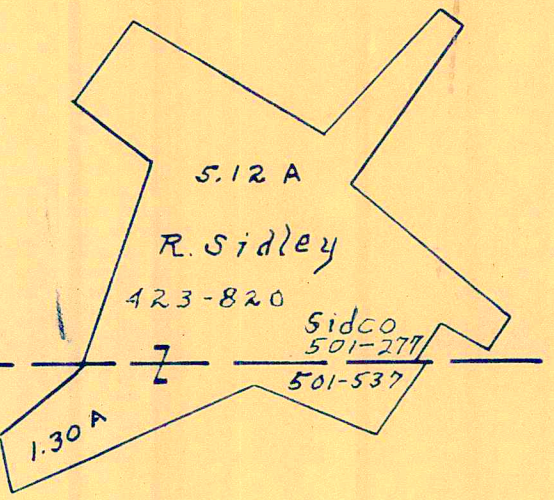
E. & C. Wagner

A.W. SIDLEY INC  
663-85

239-105  
501-277 sidco  
501-537

61.77 Ac.

R. Sidley



22.74 A

259-158  
734-793  
2.87 A  
R.E. Stone

975-377  
A. JR. & E. SAFICK

44.60 A

Carl & Sandra Peine  
733-526

R.W. Sidley  
585-1057

65 A

464-445

T.P. & M.J.  
ROBINSON

44.3 Ac.

1004-175  
1004-180  
T.P. & M.J. Robinson  
623-1167

T. P. Robison

1004-173

464-445

88.6 Ac.

1083-201

242-236

VOL 23-69 \* 3,179  
WEARM JOHNSTON AC  
1061-980

13

P. ROBINSON  
464-819

D & N. PROPERTIES

1058-690

24

R.W. SIDLEY INC  
786-401

34.89 A (cont'd)

274-244  
724-599  
A & J  
PEINE  
1 A

1149-838  
578-442  
2-39 A  
30-050-000  
A  
PEINE  
1 A

423-820  
501-277 Sidco  
501-537  
378 A

R. & E. Sidley  
7.23 A

501-277 Sidco  
501-537  
2 A

J. & V. BEAL  
98-162  
C.R. LESAK

629-1153  
7.51 Ac

J. VITT  
1133-224  
457 Ac

1135-1036  
30-04380  
1037-830  
1086-754

60 Ac  
57.44 AC

M. LUSTIG  
J. LUSTIG  
& J. LUSTIG

30-095023  
1153-690

1153-693  
M. LUSTIG  
30-095023

L. ADAMS  
1054-966  
3,154 Ac

VOL 23-69 \*  
N. VOTE 23,900  
1006-1245 1191-1071  
105-96

G.T. WINNEY  
176  
1006-1245  
30-095715 3 Ac

M.A. & K.M. ADAMS  
1027-459 5.0 Ac

G.E. & J.C. HUBER  
1025-109 5.0 Ac

VOL 23-69 \* 2 VOL 23-69 \* 1  
B.S. McCANN  
3,199 Ac 1050-656

7.312 Ac  
ROBINSON DEWEY SUB.  
1077-501

A.J. BAKEL  
1050-886

LEDEBOMT  
BOARD OF  
EDUCATION  
631-1246

78 Ac.  
-5  
73 Ac.  
-5  
68 Ac.  
51.16 Ac

154.95 A  
4.57  
150.38

R.E. & M.C.  
WEST  
643-777  
10 A

G.M. & J.  
CARIATI  
1021-678  
E.H. & W.E.  
Toth  
1194-115  
10-14-99  
2.03 Ac.

80-061810  
A  
ROBINSON  
683-1040  
24 Ac

DR. & SC. THOMPSON  
1027-774

751 AC

257-257  
688-1110  
A. BACHNA

788-740

E.W. SINKKO & J.S. KASSAY  
785-1130  
712-303

17.33 AC

J & S BAULLO  
631-620  
4.3

3 Ac  
727-107  
T.M. NIEHUS  
734-1194

L.A. STOLTZ  
776-1118

WB & LG  
MANUS  
1050-  
8H

2.5 Ac.

2.8 Ac.

SCALE 1" = 300'

JAN 1, 1998

A	B	C	D
E	F	G	H
I	J	K	L
M	N	O	P

THOMPSON TWP.

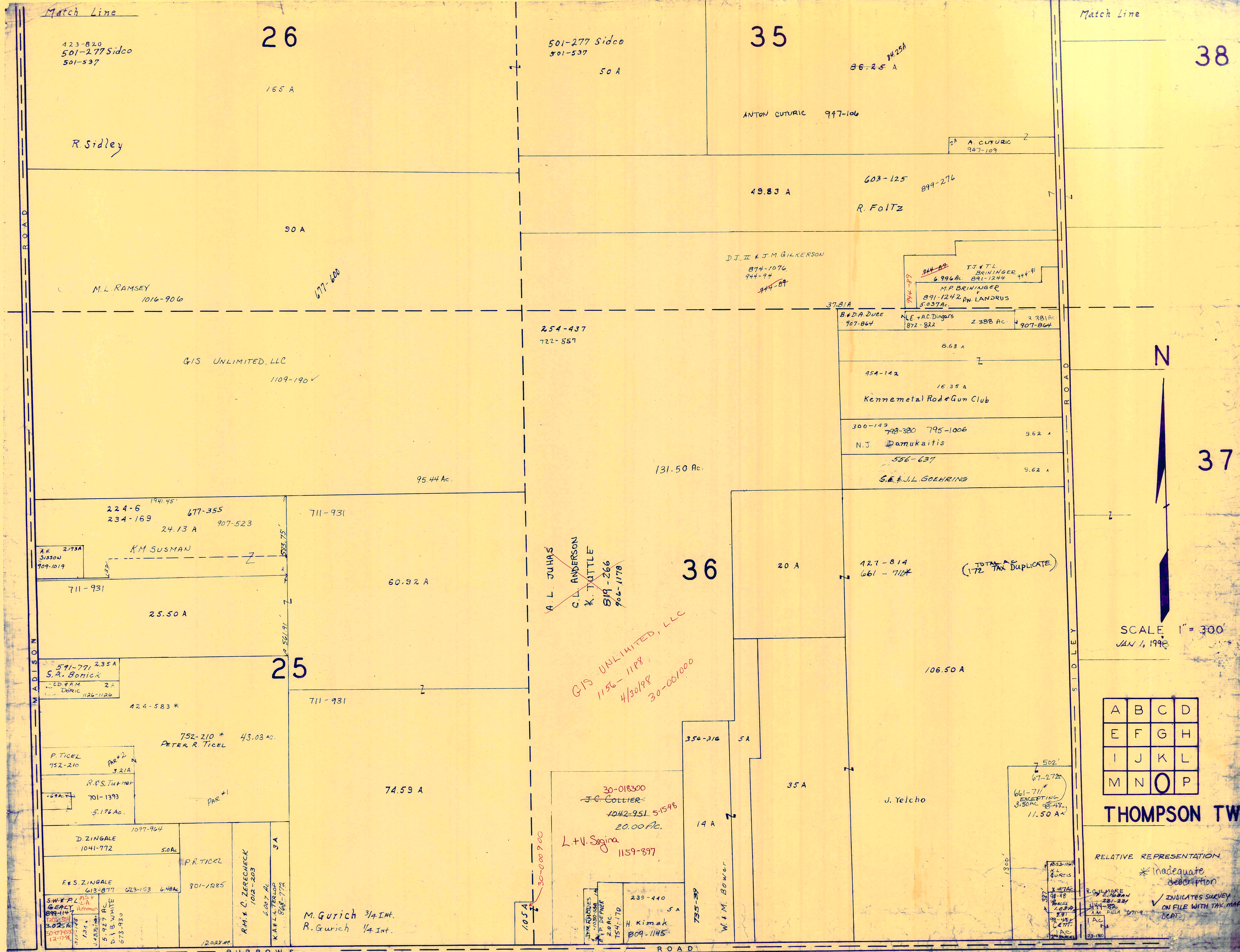
RELATIVE REPRESENTATION

R.A. LESAK  
642-481

INDICATES SURVEY ON FILE  
WITH TAX MAP DEPT.

\* Inadequate  
description

MONTVILLE TWP.



Match Line

Match Line

26

35

38

423-820  
501-277 Sidco  
501-537

501-277 Sidco  
501-537

86-25 A  
14.25 A

R. Sidley

ANTON CUTURIC 947-106

A. CUTURIC  
947-109

49.83 A

603-125  
899-276  
R. FOLTZ

90 A

M.L. RAMSEY  
1016-906

677-600

D.J. II & J.M. GILKERSON  
874-1076  
944-94  
944-89

T.J. & T.L. BRUNINGER  
6996 Ac. 891-1244  
M.P. BRUNINGER  
891-1242  
P.N. LANDRUS  
5037A

GIS UNLIMITED, LLC  
1109-190

254-437  
722-557

B & D.A. DUE  
907-864  
N.E. & A.C. DINGERS  
872-822  
2.388 Ac.  
3.381 Ac.  
907-844

8.63 A

454-142  
16.35 A  
Kennemetal Rod & Gun Club

300-143  
798-380 795-1006  
N.J. DOMUKAITIS  
3.62 A

95.44 Ac.

131.50 Ac.

556-637  
G.B. & J.L. GOEHRING  
9.62 A

224-6  
234-169  
1941.45'  
677-355  
24.13 A  
907-523

711-931

A.H. 2173A  
Sisson  
909-1019

K.M. SUSMAN

711-931

60.82 A

~~A.L. JUHAS  
C.L. ANDERSON  
K. TUTTLE  
819-266  
966-1178~~

36

20 A

427-814  
661-711

(TOTAL ASSESSMENT  
172 TAX DUPLICATE)

591-771 235A  
S.A. Bonick  
ED. & A.M. DORIC  
1126-1126

25

424-583 \*

711-931

GIS UNLIMITED, LLC  
1156-1188  
4/30/98  
30-001000

106.50 A

P. TICEL  
752-210  
PAR #2  
3.21A

752-210 \*  
PETER R. TICEL  
43.03 Ac.

74.59 A

R.S. TICEL  
701-1393  
5.174 Ac.

D. ZINGALE  
1041-772  
5.0 Ac.

P.R. TICEL

F.R. ZINGALE  
613-877 623-153 648 Ac. 801-1285

S.W. & P.L. GEARY  
899-1147  
1000-0501  
3.025 Ac.  
50-014501  
12-17-94

M.S. & A. HAHMAN  
5.927 Ac.  
D.B. WHITE  
673-920

R.M. & C. ZEREHECK  
1012-203  
2.007 Ac.  
K.A. & L. TENCOP  
848-772

M. Gurich 3/4 Int.  
R. Gurich 1/4 Int.

30-018300  
J.C. COLLIER  
1042-951 51596  
20.00 Ac.  
L.V. Sogina  
1159-897

239-410  
H. Kimak  
809-1145

35A-316 5A

14 A

W. & M. BOWER  
735-39

35 A

J. Velcho

67-272  
661-711  
EXCEPTING  
3.50 AC. BEARS  
11.50 A

A	B	C	D
E	F	G	H
I	J	K	L
M	N	O	P

THOMPSON TWP.

RELATIVE REPRESENTATION  
\* Inadequate description  
INDICATES SURVEY ON FILE WITH TAX MAP DEPT.



SCALE 1" = 300  
JAN 1, 1998

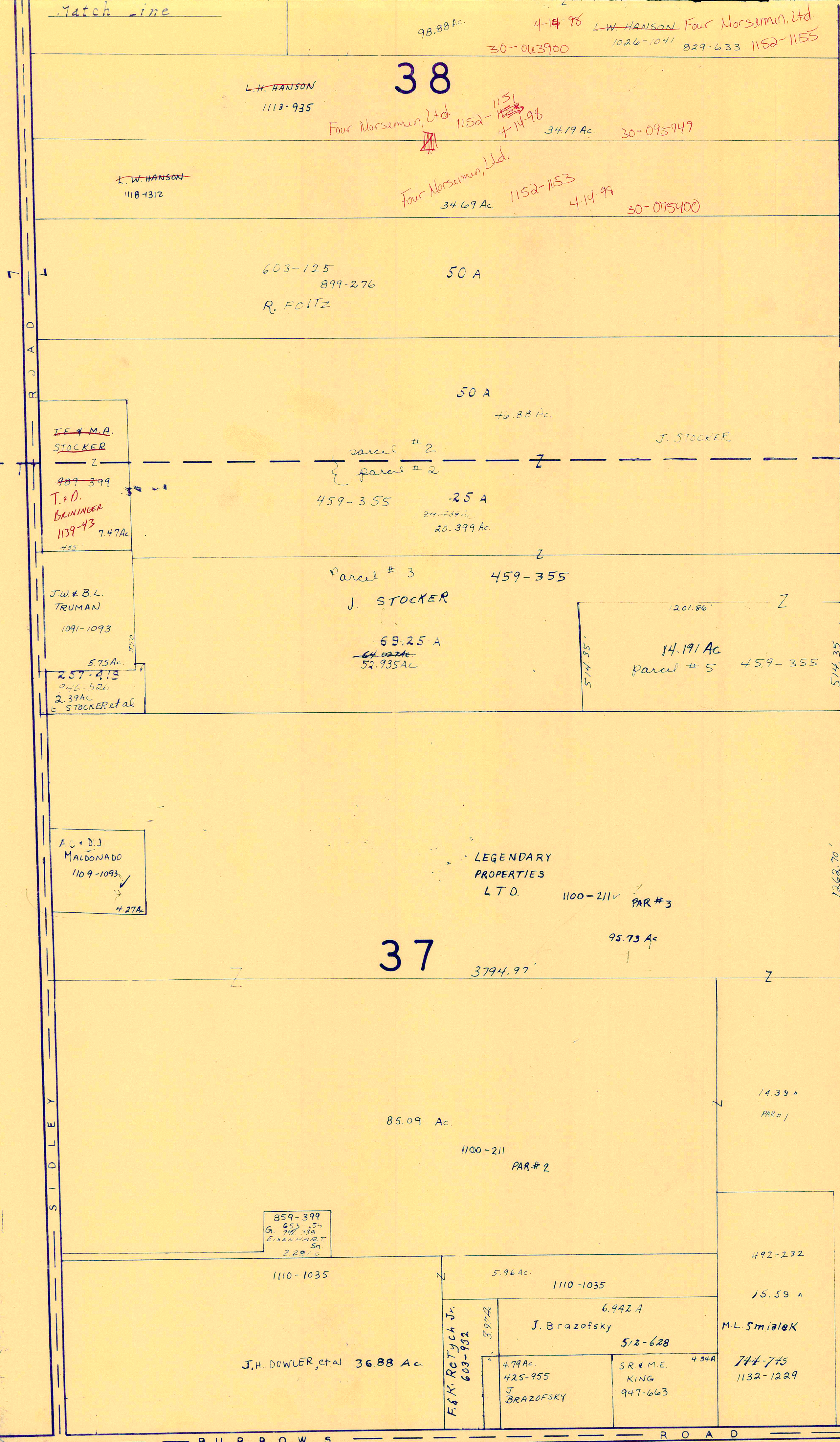
ADLISON ROAD

SIDLEY ROAD

BURROWS ROAD  
MONTVILLE TOWNSHIP

Match Line

Match Line



A S H T A B U L A C O U N T Y



JAN. 1998.

\* Inadequate description  
 ✓ INDICATES SURVEY ON FILE WITH TAX MAP DEPT.  
 SCALE 1" = 300'

RELATIVE REPRESENTATION

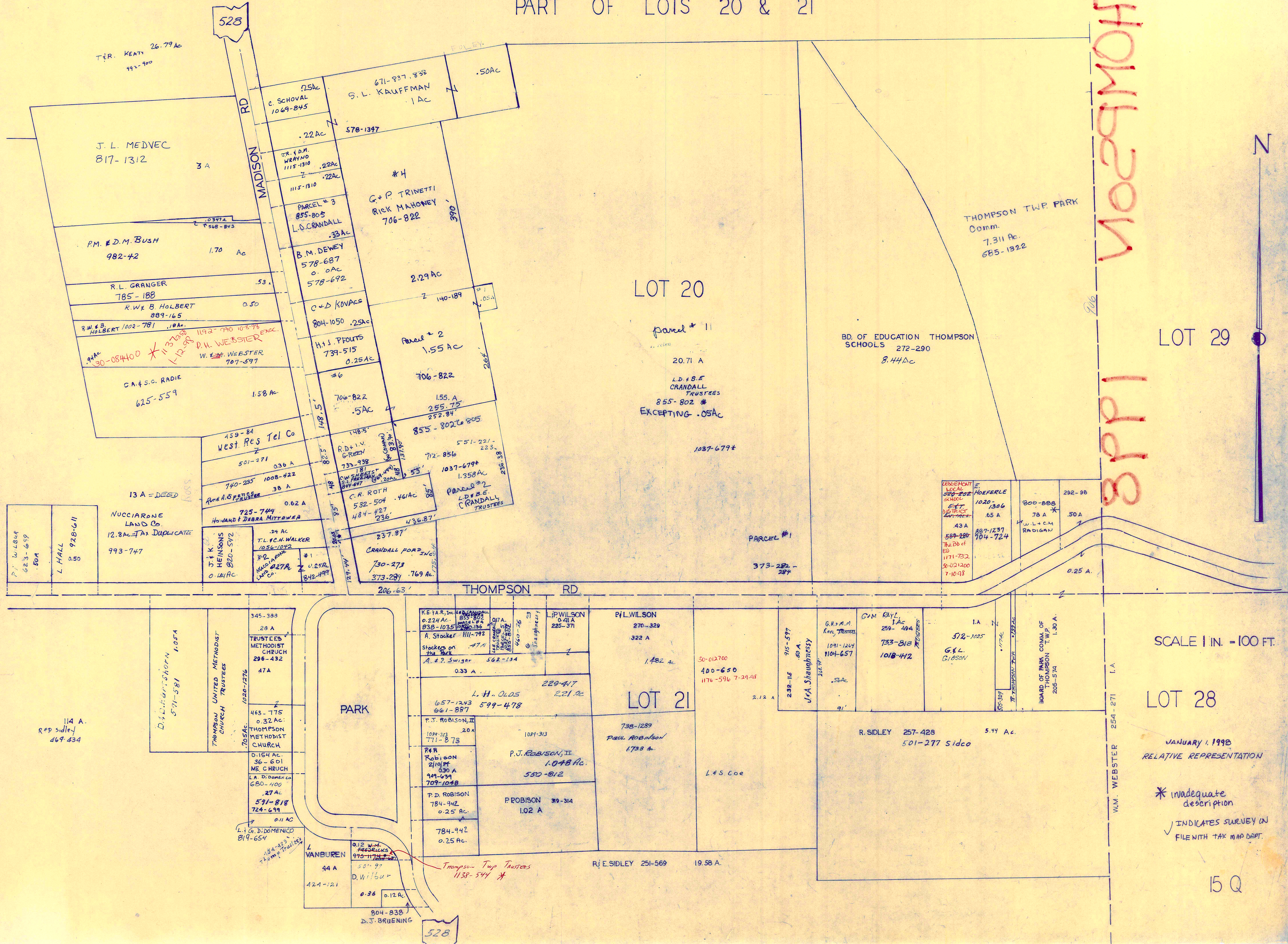
A	B	C	D
E	F	G	H
I	J	K	L
M	N	O	P

MONTVILLE TWP.

THOMPSON TWP.

# THOMPSON TP

PART OF LOTS 20 & 21



THOMPSON  
8PP1



SCALE 1 IN. = 100 FT.

LOT 28

JANUARY 1, 1998  
RELATIVE REPRESENTATION

\* inadequate description  
✓ INDICATES SURVEY IN FILE WITH TAX MAP DEPT.

15 Q